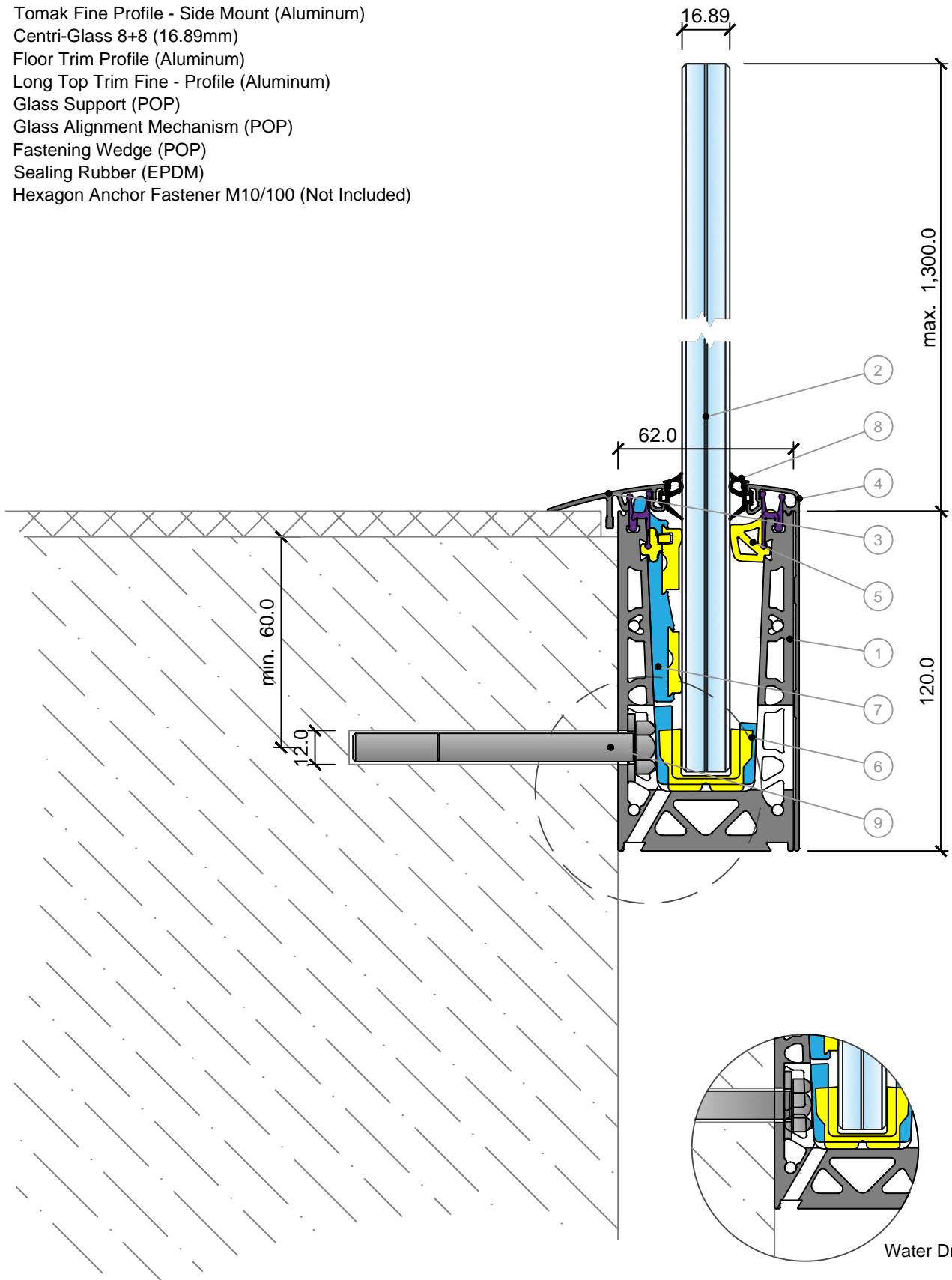


TK-6202



Fine Profile 1.5 kN Side Mount

1. Tomak Fine Profile - Side Mount (Aluminum)
2. Centri-Glass 8+8 (16.89mm)
3. Floor Trim Profile (Aluminum)
4. Long Top Trim Fine - Profile (Aluminum)
5. Glass Support (POP)
6. Glass Alignment Mechanism (POP)
7. Fastening Wedge (POP)
8. Sealing Rubber (EPDM)
9. Hexagon Anchor Fastener M10/100 (Not Included)



Drawing:	Tomak - TK-6202.dwg
Project:	Fine Profile - Side Mount
System:	Tomak Glass Code: TK-6202
Web:	www.tomak.co.il

Your Glass Systems Experts

Drawn By:	ID	Scale:	1:2
Date:	02-May-2019		
<p>These drawings are the sole property of Tomak Ltd, ID - 511760340 Any reproduction in part or as a whole & forwarding to unauthorized third parties without the written permission of Tomak Ltd. is prohibited.</p>			